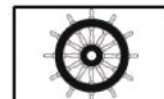




***Class B-15
Thin Bulkhead Panel
(25 mm)***



*Panels are fitted into each others.
Strong and smooth continuous wall form.*



2690 / 17



Technical Characteristics of Class B-15 Thin Bulkhead Panel (25 mm)



Fire Class : B-15



Thickness : 25 mm



Width : 500 mm (± 1 mm)



Standart Length : 2200 mm (± 3 mm)



Manufacturable Length : 1000 ~ 2465 mm (± 3 mm)



Steel Thickness : 0,6 mm



Finish Surface : PVC/PVC or PVC/GLV or PSL/GLV or GLV/GLV or PAINTED/PAINTED



PVC Film : PVC film has "low flame spread" certificate



Insulation Materials : Mineral Wool - Rockwool / Denmark



Density of Rockwool : 180 kg/m³



Thermal Conductivity Coefficient.. : T (°C) 10 - λ (W/mK) 0.038



Sound Reduction Ability Rw : Only Panel 28.7 dB



Weight : 14.5 kg/m²

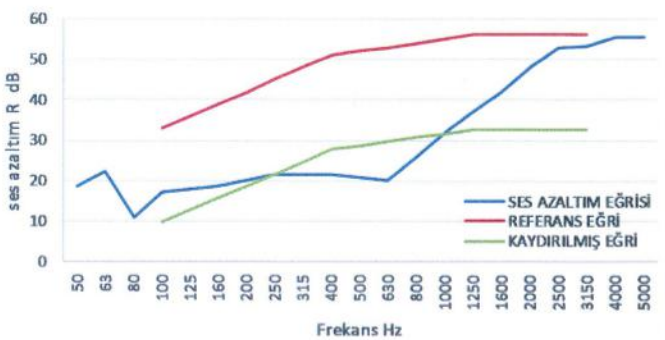


Application : It is used the partition panel or the lining panel in front of bulkhead



Certificate [IMO Resolution A.754(18)] :  Flag Authority (TC Maritime Undersecretary)

Sound Insulation Diagram



Bureau Veritas



Turk Loydu



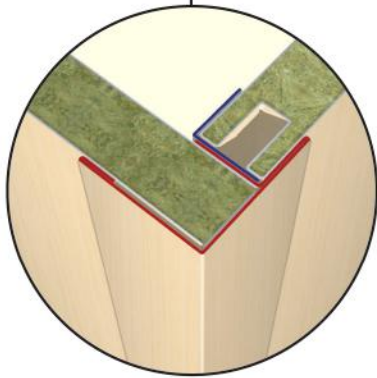
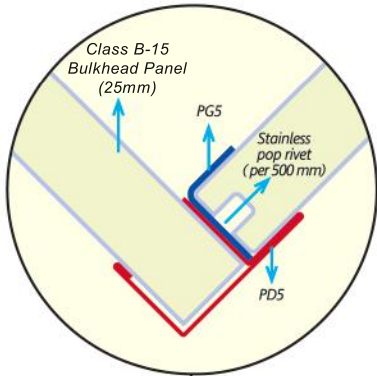
MED Marine Equipment Directive (EC)



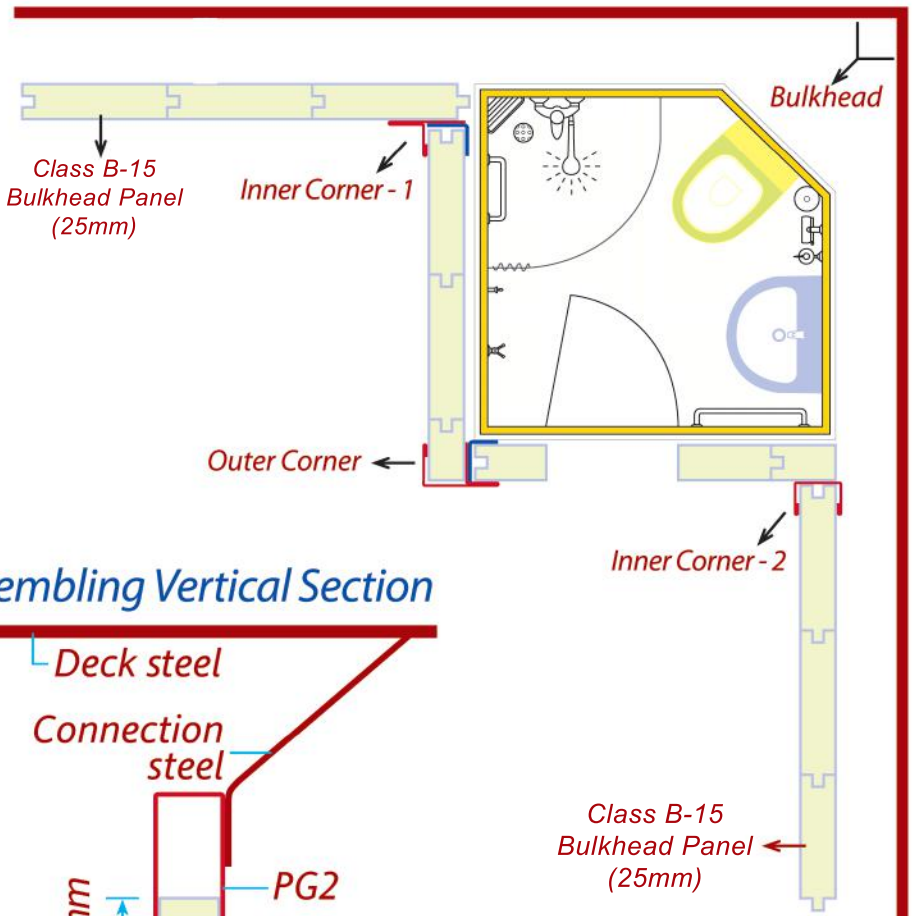
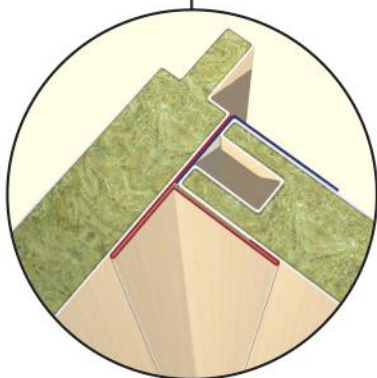
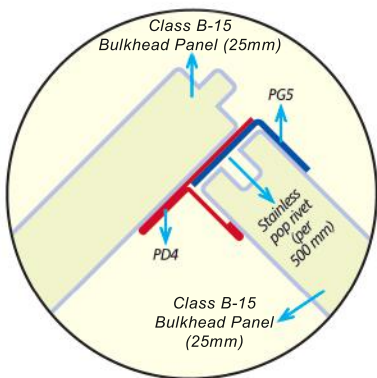
Russian Maritime Register of Shipping

Assembling of Class B-15 Thin Bulkhead Panel (25mm)

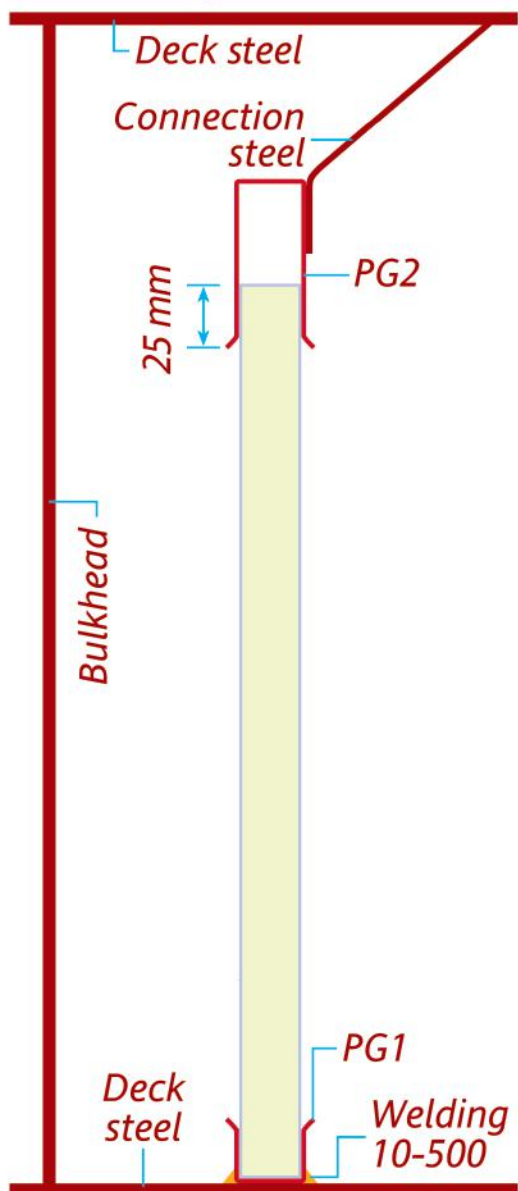
Outer Corner Details



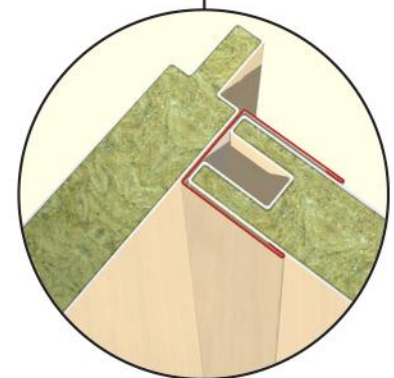
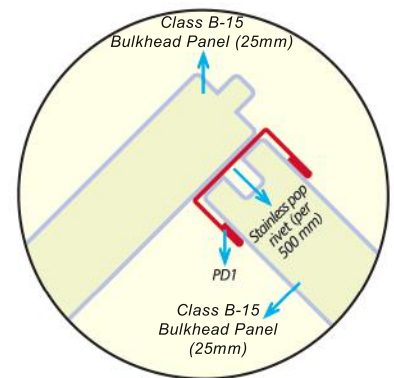
Inner Corner Details - 1



Assembling Vertical Section

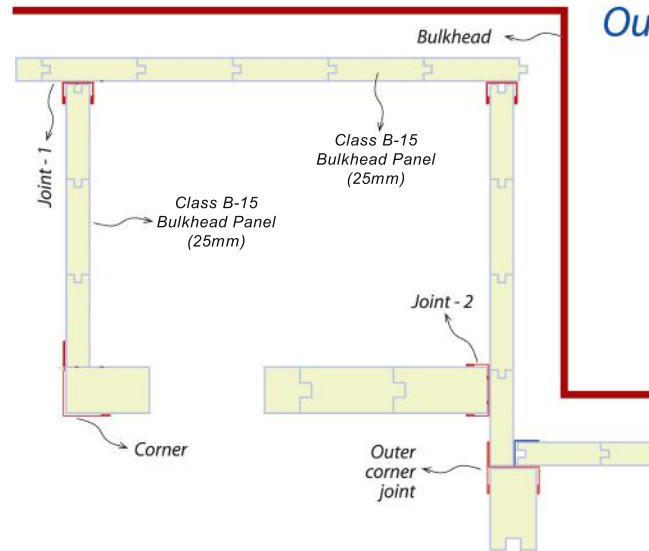
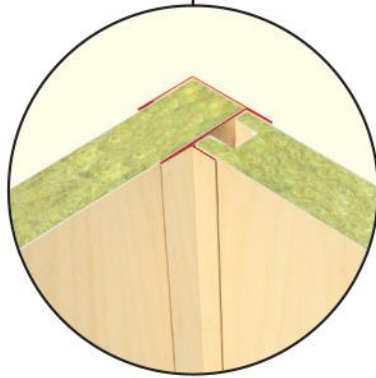
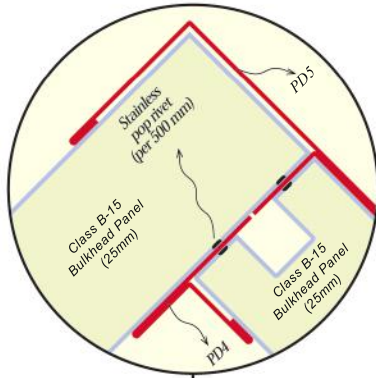


Inner Corner Details - 2

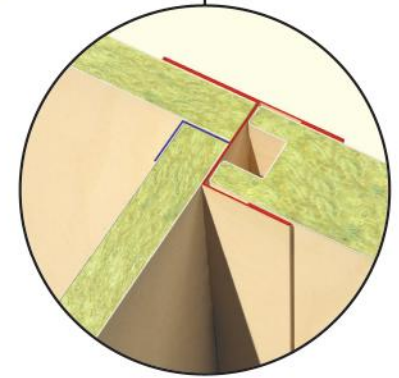
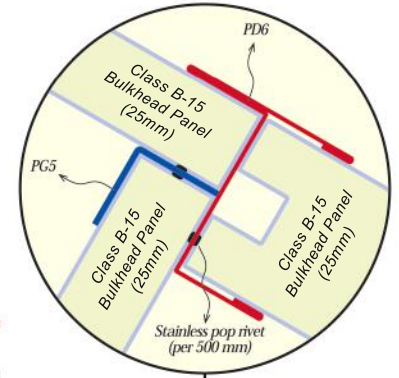


Assembling of Class B-15 Thin Bulkhead Panel (25mm)

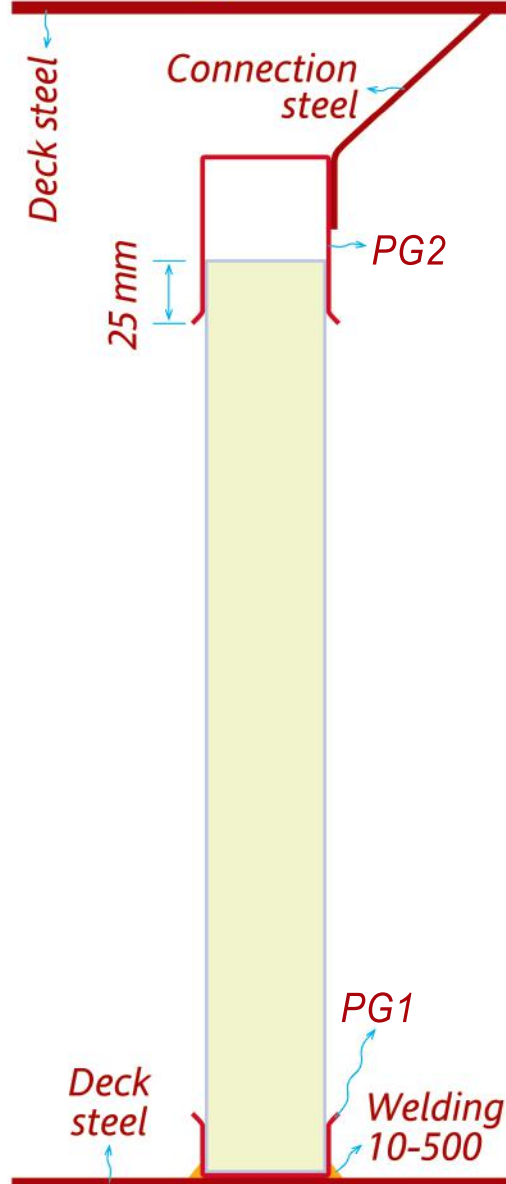
Corner Detail



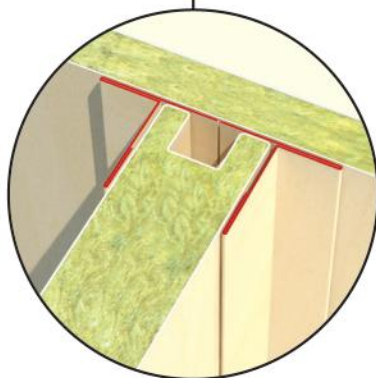
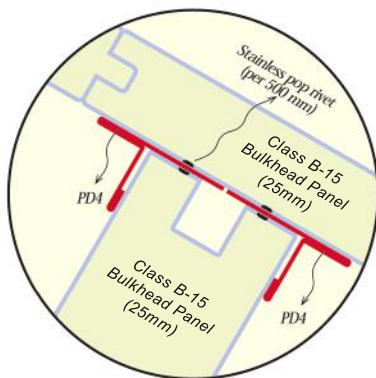
Outer Corner Assembling Detail



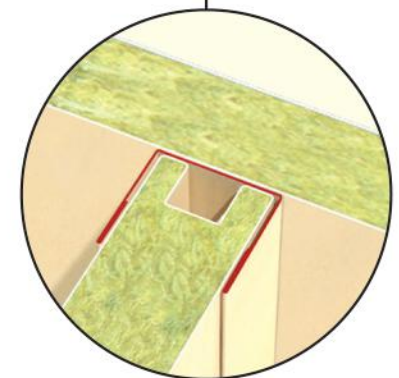
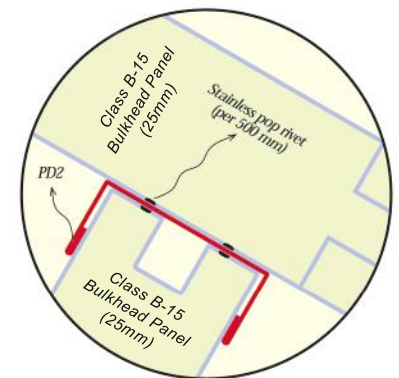
Assembling Vertical Section



Joint Detail - 1

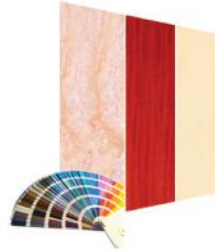


Joint Detail - 2



Advantages of Class B-15 Thin Bulkhead Panels (25mm)

Fast and easy assembling.



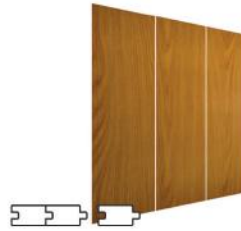
Plenty of color choice.

Surface would be **PVC, stainless or galvanized steel.**



Standart length manufacturing. Available to produce required size.

Vertical mounting fitted into each others.



PVC surfaces are covered with a **protective film** against dirty and scratching.

Vertical mounting fitted into each others kind, gives important advantages:

Connected areas are only one regular line wall surface is smooth.

Strong and became partially carrier spect.

No noise when vibration.

No corrosion because of not touching to steel to steel.

Much effective sound and fire insulation.

