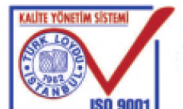
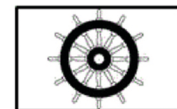




Class B-15 Partition Panel



*Panels are fitted into each others.
Strong and smooth continuous wall form.*



Technical Characteristics Class of B-15 Partition Panel



Fire Class : B-15



Thickness : 50 mm



Width : 500 mm (\pm 1 mm)



Standart Length : 2200 mm (\pm 3 mm)



Manufacturable Length : 1000 ~ 2465 mm (\pm 3 mm)



Steel Thickness : 0,6 mm



Finish Surface : PVC/PVC or SS/SS or GLV/GLV



PVC Film : PVC film has "low flame spread" certificate



Insulation Materials : Mineral Wool - Rockwool / Denmark



Density of Rockwool : 130 kg/m³



Sound Reduction Ability Rw : 29 dB



Weight : 17,6 kg/m²

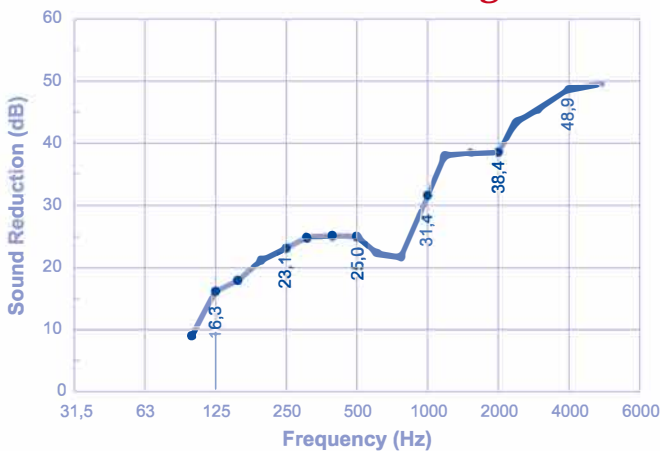


Application : It is used as partition panel



Certificate [IMO Resolution A.754(18)] :  Flag Authority (TC Maritime Undersecretary)

Sound Insulation Diagram



Bureau Veritas



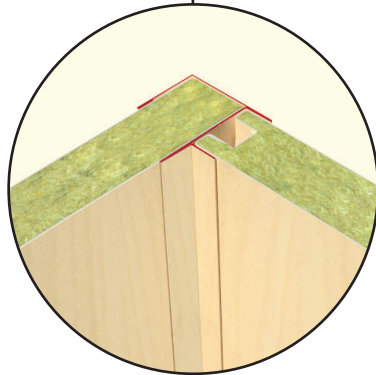
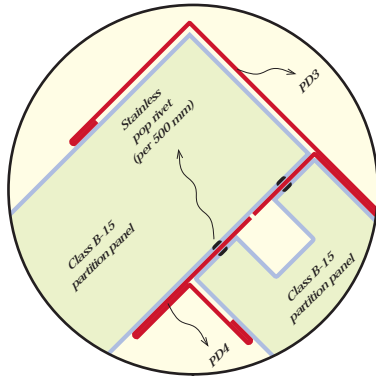
Turk Loydu



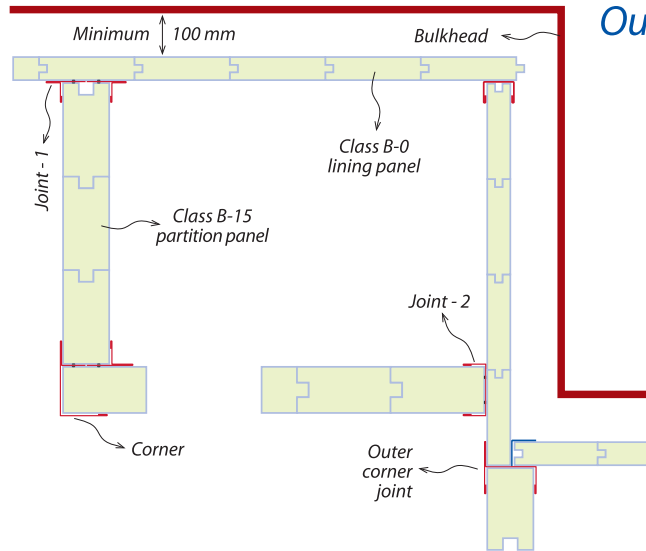
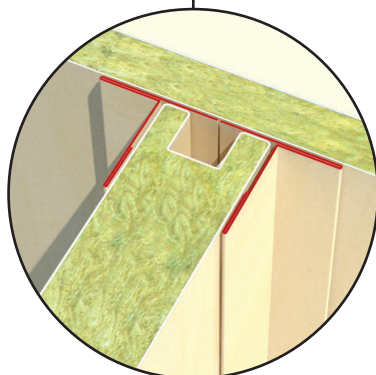
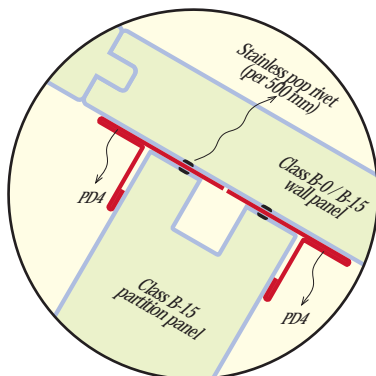
MED Marine Equipment Directive (EC)

Assembling of Class B-15 Partition Panels

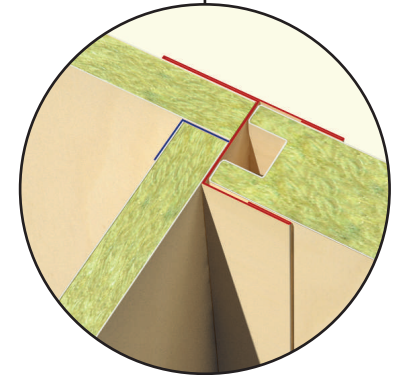
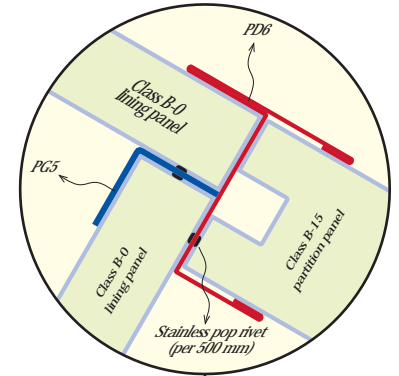
Corner Detail



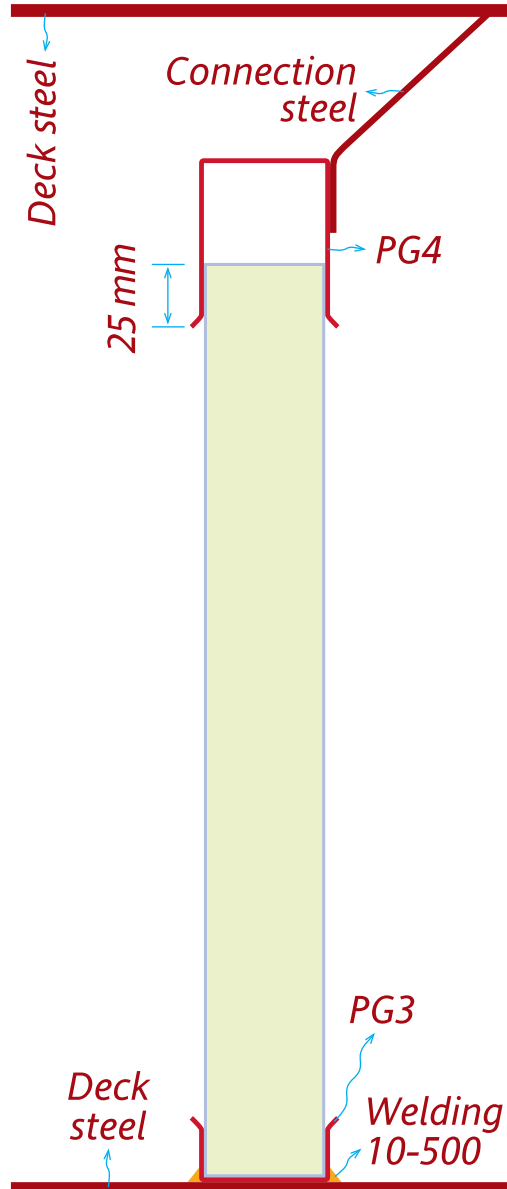
Joint Detail - 1



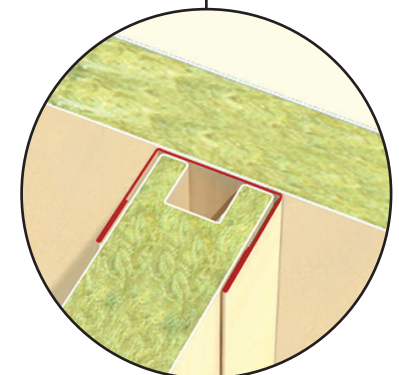
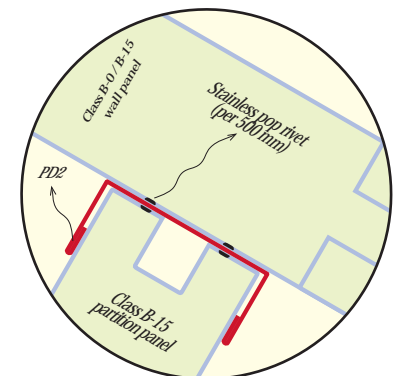
Outer Corner Assembling Detail



Assembling Vertical Section

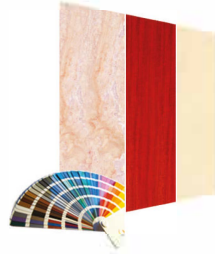


Joint Detail - 2



Advantages of Class B-15 Partition Panels

Fast and easy assembling.



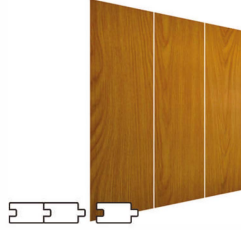
Plenty of color choice.

Surface would be PVC, stainless or galvanized steel.



Standart length manufacturing. Available to produce required size.

Vertical mounting fitted into each others.



PVC surfaces are covered with a protective film against dirty and scratching.

Vertical mounting fitted into each others kind, gives important advantages:

Connected areas are only one regular line wall surface is smooth.

Strong and became partially carrier spect.

No noise when vibration.

No corrosion because of not touching to steel to steel.

Much effective sound and fire insulation.

