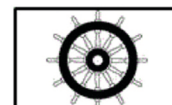


Wet Units



It provides effective and economical solutions in ships' wet unit applications.



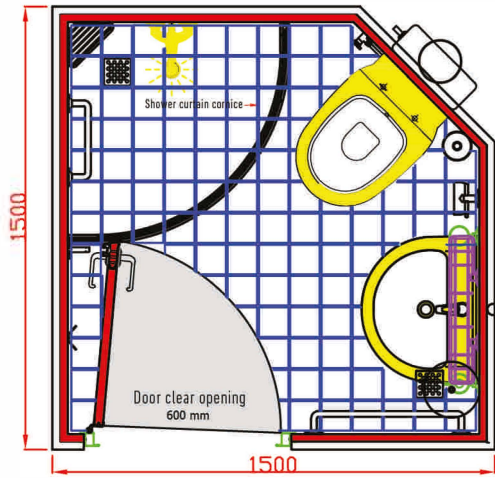
2690 / 17



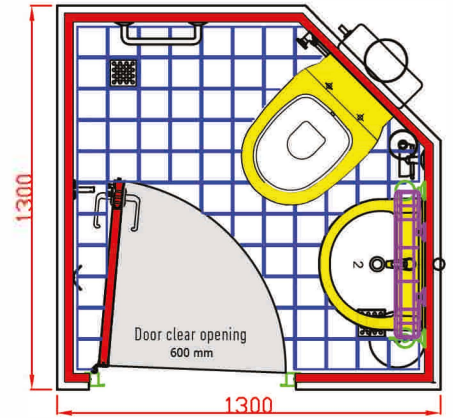
Technical Specifications of Wet Units

	Fire Class	: C	
	Standard Outside Height	: 2220 mm	
	Standard Inside Height	: 1990 mm	
	Wall Thickness	: 25 mm	
	Outside Surface	: GLV	
	Inside Surface	: PVC, SS	
	Panel Steel Sheet Thickness	: 0,6 mm	
	Door Leaf Surface	: PVC, SS	
	Door Frame Surface	: Electrostatic dry powder paint (Ral)	
	Door Dimensions (Clear Opening)	: 600 x 1700 mm	
	PVC Film	: PVC film has "low flame spreading" certificate	
	Isolation Materials	: Mineral Wool - Rockwool / Denmark	
	Mineral Wool Density	: 130 kg/m ³	
	Weight	: ~385 kg/pc (Standard wet unit with shower)	
	Applicaition	: It is used ships accomodations places	
	Certificate (Solas and IMO)	:  Flag Authority (Ministry of Transport Maritime Affairs and Communications)	
		:  Turkish Lloyd	
		:  Bureau Veritas	
		:  Russian Lloyd	
		:  M.E.D. Marine Equipment Directive (EC)	

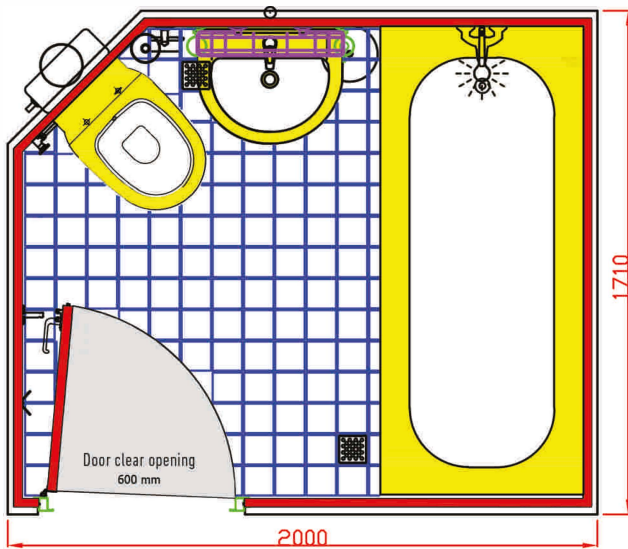
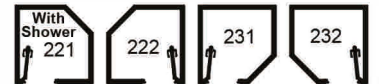
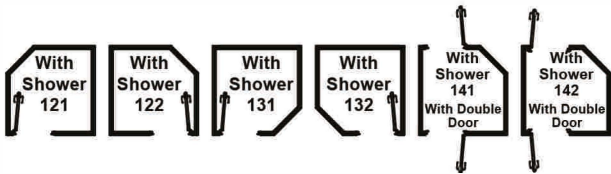
Main Model Wet Units



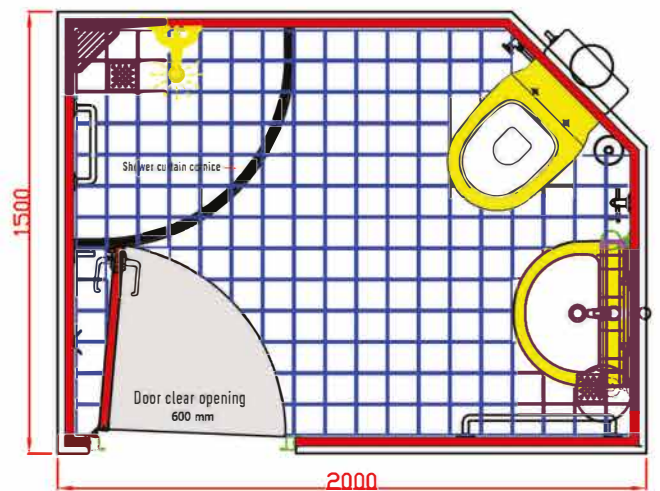
Model-111
With Shower



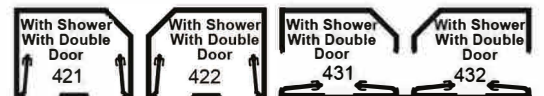
Model-211
Without Shower



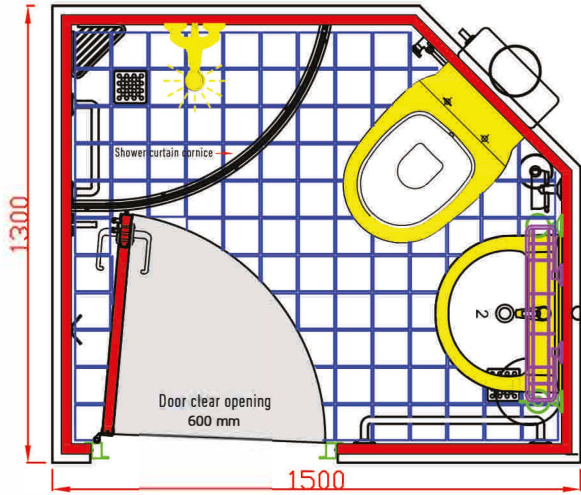
Model-311
With Bathtub



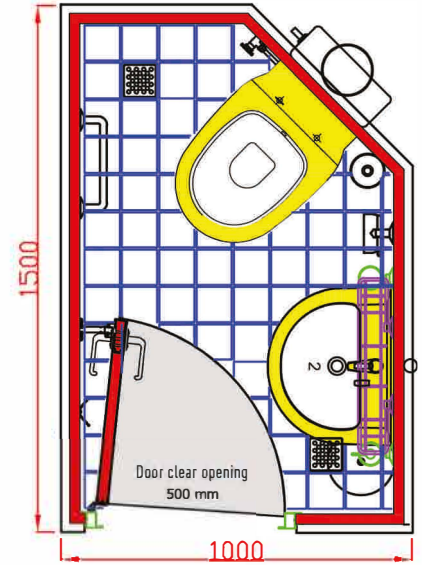
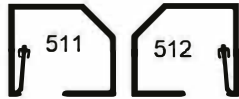
Model-411
With Shower



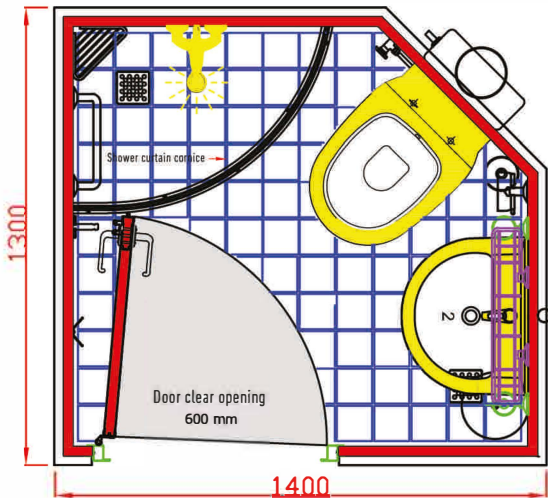
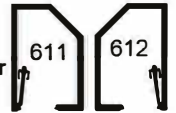
Secondary Model Wet Units



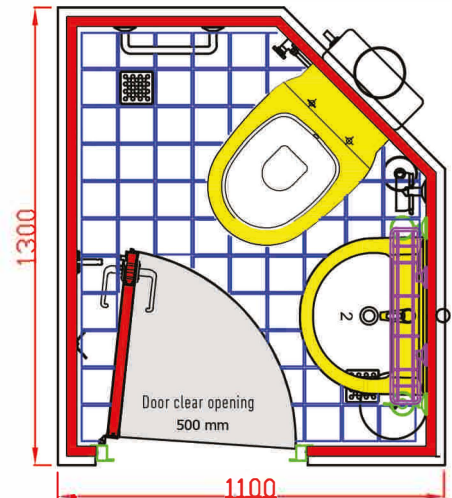
**Model-511
With Shower**



**Model-611
Without Shower**



**Model-711
With Shower**



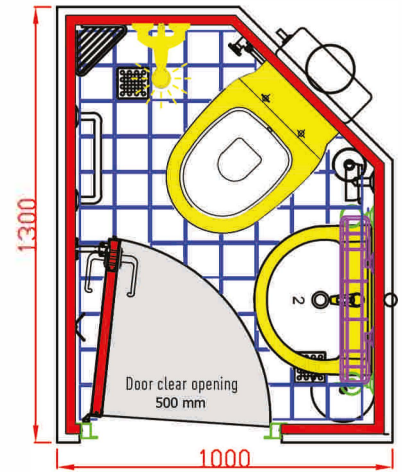
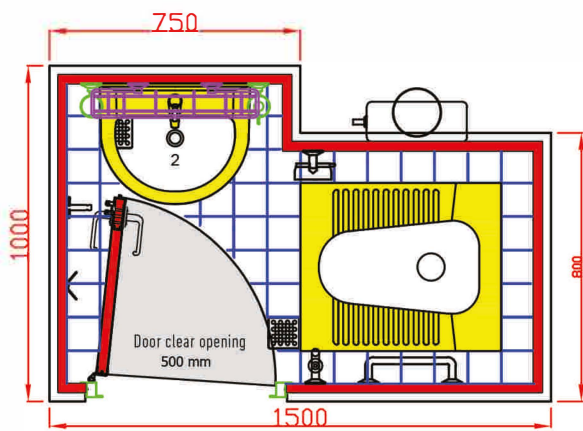
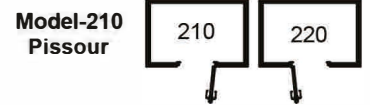
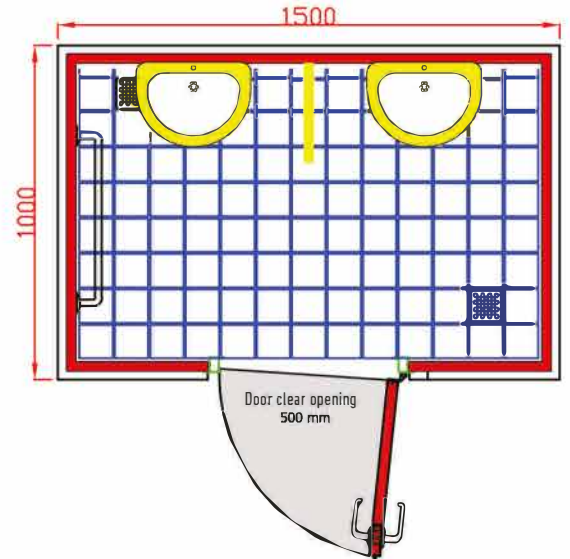
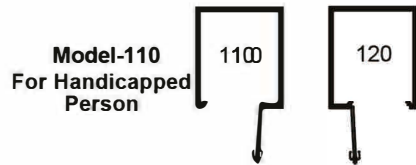
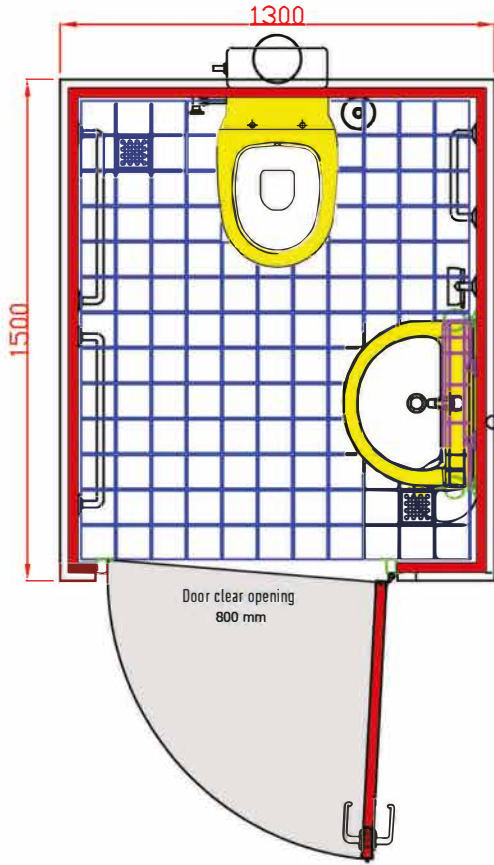
**Model-811
Without Shower**



Without Shower



Secondary Model Wet Units



Accessories and Equipments



Door leaf surface is PVC covered.



Door handles are completely stainless steel.



Door leaf ventilation grill is stainless steel.



Door frame electrostatic dry powder painted box shaped profile.



Door stopper is stainless steel.



Hinges are stainless steel.

Fresh water pipes are PPRC.



Cover handle and lock is pure stainless.



Grey water discharge pipes are stainless steel. (ø38 mm)



Accessories and Equipments



Shower set is chrome coated brass and its height adjustable.



Shower curtain rail is aluminum.



Shower mixing batteries is chrome coated brass.



Shower water trap system is stainless steel and smellproof.



General water trap system is stainless steel and smellproof.

Bathroab-clothes hook is stainless steel.



Bath grab rail is brass (chrome plated)



Shampoo set stainless steel/chrome coated brass.



Accessories and Equipments



Washbasin is ceramic below part is stainless steel.



Bath grab rail is brass (chrome plated)



Waste basket is furnished with a cover mounted to wall and it is stainless steel.



Washbasin Battery is chrome coated brass.



Mirror



Washbasin outlet pipe is spiral plastic.

Toothbrush holder mounted to wall, chrome coated brass.



Framed dresser is stainless steel/chrome coated brass.



Liquid soap holder is push type on top and it is chrome coated brass.



Accessories and Equipments



Hanging type closet; its cover is melamine, body is ceramic and toilet tap is chrome coated brass.



Toilet paper holder fixed with a cover plate, it is stainless steel.



Reservoir fitted outside of wet unit wall special designed plastic.

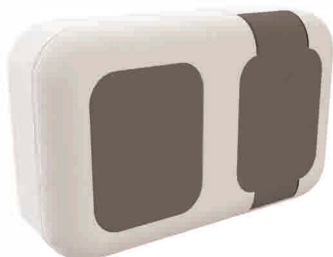


Electric cables has MCGC type approval certificate.



Toilet brush holder furnished with a cover, mounted to wall and it is stainless steel.

Switch&Socket IP 54 protected, plastic bodied and they have covers.



Electric junction box IP 56 protected and it is made of brass.



Lamp IP 55 protected and chrome framed.



With Shower/With Bathtub Wet Units Equipment List

	Door Leaf		Washbasin		Shampoo Set
	Door Frame		Washbasin Mixing Battery		Bath Grab Rail
	Handle Set		Washbasin Discharge Pipe		Ceiling Ventilation Grill
	Ventilation Grill		Liquid Soap Holder		Water Outlet System
	Door Stopper		Towel Holder		Shower Curtain Hanger
	Lock		Mirror		Bathtub
	Hanging Type Closet		Etajer (Shelving Unit)		Light Fixture
	Toilet Seat Cover		Toothbrush Holder		Switch & Socket with Cover
	Reservoir		Waste Basket		Electric Distribution Box
	Toilet tap		Shower Set		Electric Cable
	Toilet Brush Holder		Shower Mixing Battery		Fresh Water Pipes
	Toilet Paper Holder		Wall Hanger (for Bathrobe & Clothes)		Inlet Ball Valves
					Waste Water Pipes

Without Shower Wet Unit Equipment List



Door Leaf



Toilet Brush Holder



Waste Basket



Door Frame



Toilet Paper Holder



**Wall Hanger
(for Bathrobe & Clothes)**



Handle Set



Washbasin



Ceiling Ventilation Grill



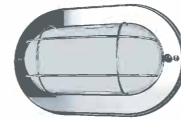
Ventilation Grill



Washbasin Mixing Battery



Water Outlet System



Light Fixture



Door Stopper



Washbasin Discharge Pipe



Switch & Socket with Cover



Lock



Liquid Soap Holder



Electric Distribution Box



Towel Holder



Hanging Type Closet



Mirror



Electric Cable



Toilet Seat Cover

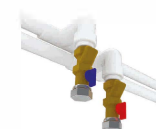
Fresh Water Pipes



Reservoir



**Etajer
(Shelving Unit)**



Inlet Ball Valves



Toilet tap



Toothbrush Holder



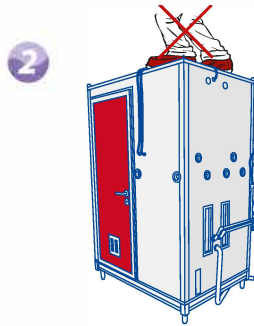
Waste Water Pipes



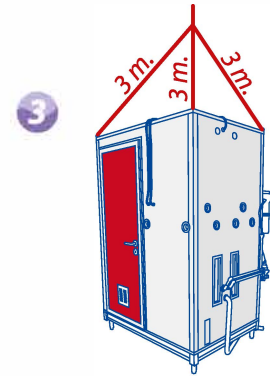
Transportation and Mounting Rules



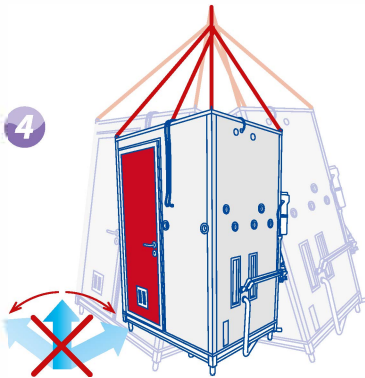
1 Tie up a suitable rope to topcorners eyebolts at least three pieces for transportation by crane.



2 Never get on top, never stand on ceiling panels.



3 Use 3 metres length rope at least from each corners for transportation by crane.



4 Avoid sudden maneuvering when lifting, transportation and replacement operations to vessels.



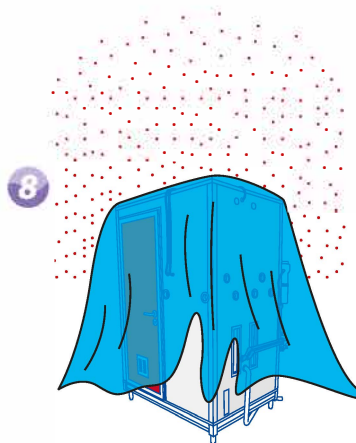
5 Do not prefer to transport with fork-lift if you have not any obligations.



6 Use wooden beam to protect below pipes if you would have to use fork-lift for transportation.



7 Wet Units should be protected from rain or any kind of wetting.

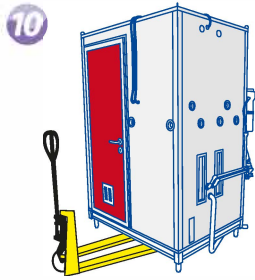


8 Protect wet units any cloth covering when scraping in dock.

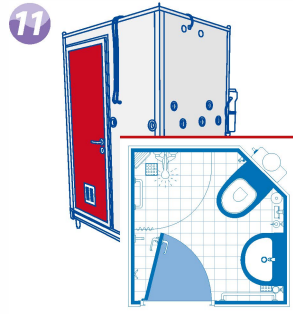


9 Do not push or pull from outside walls.

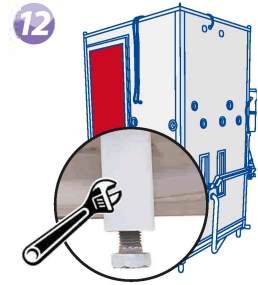
Transportation and Mounting Rules



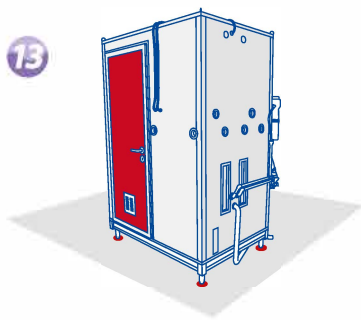
10 Push with great attention from below part of wet unit after inserting a transpallet when transporting with transpallet.



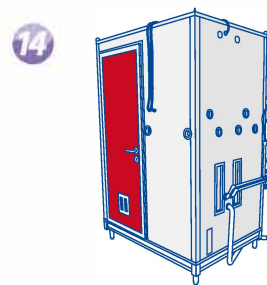
11 Wet units should be put to right place and right direction the same as technical drawings.



12 Adjust the legs heights with a wrench for wet units levelling to deck plate.



13 Weld adjustable legs to deck plate after making all adjustments. Do not weld from steel base structure of wet unit.



14 Mounting operations has been completed.

Putting Into Use of Wet Units



1 Fasten grey water discharge pipe and closet pipes to vessel, related connections for getting leakproof style.



2 Fasten fresh water lines to wet units; red valve inlet for hot water and blue valve inlet for cold water.

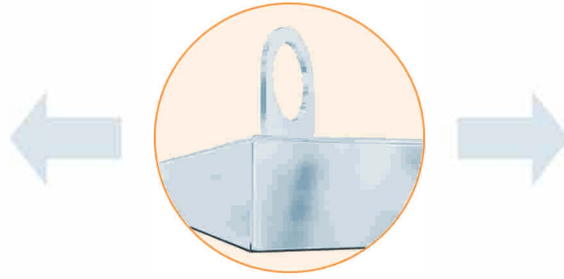


3 Mount electrical connections from electric junction box.



4 Mount wet unit air hole to vessel relevant air channel

Advantages of Wet Units



*It can be transportable; lifting by ropes from top corner eyebolts when using **crane** or **fork-lift** and from below parts of wet unit lifting with fork-lift with using a wooden beam.*



*Wet Units **height is adjustable.***



*Closet pedestal is fixed to bottom base structure with **special supporters.***

Accessories** are mounted steel circular apparatus which is inserted outer walls. They could be **removable, reinsertable.



Advantages of Wet Units



*Water discharge trap systems are specially designed, they are stainless steel and **smellproof**.*



*Closet pedestal is fixed to bottom base steel structure which is unique tray type and **waterproof**.*



***Doors** are fire resistant and has ventilation grill.*



***Walls and ceiling** are produced from fire resistant sandwich panels.*



***Fresh water pipes** are PPRC.*

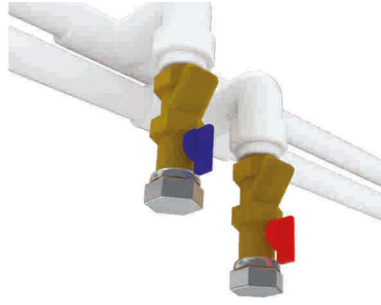


***Grey water discharge pipes** are stainless steel.*

Advantages of Wet Units



Fast and easy assembling.



Inlets of hot water and cold water have **filters**.



Plenty of **colors** are available.



Reservoir system is **outside** of wet unit walls.



Reservoir can be **easily repair** due it comes inside of wet unit when opened maintenance cover.

Various **model** and **size** production is available.

Electrical materials has **IP protection**.

PVC surfaces are covered with a **protective film** against dirty and straching.

